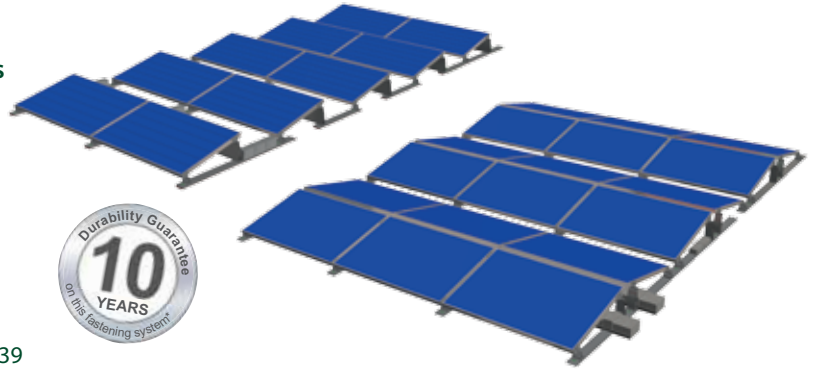


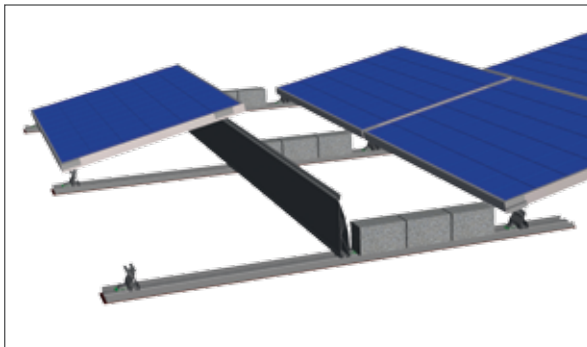
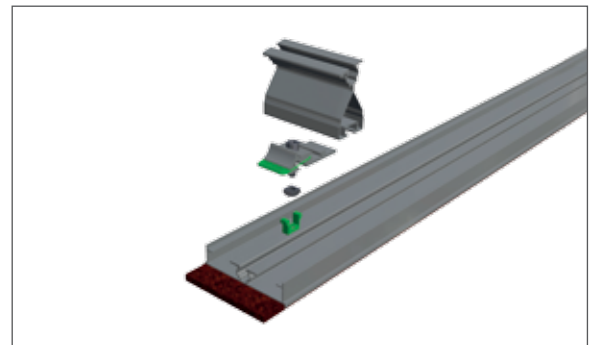
### FixGrid

The inclined solar fastening system for flat roofs with German general technical approval

- Inclination angle of 6° respectively 13°
- Optimized regarding wind loads, only little superimposed load required
- No perforation of the roof
- For flat roofs
- Optimized regarding material and cost
- General technical approval according to Z-14.4-639 and Z-14.4-631

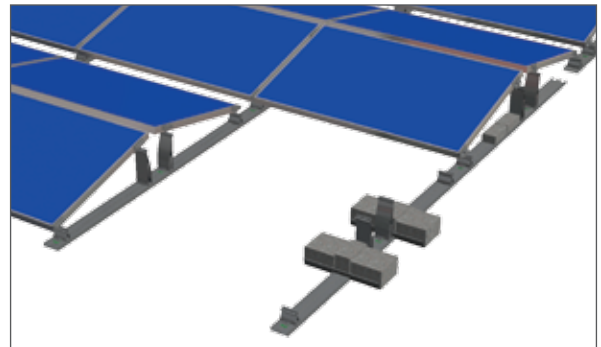


The latest generation of flat roof solar plants of any desired size. With AluGrid, Schletter is offering a system optimized in both material and tool requirements, the solar modules are arranged in closed rows with a fixed inclination angle of 6 or 13 degrees. Only minimal superimposed loads are required. The components are interconnected using the Standard Schletter KlickIn system. The maximum admissible roof inclination is 3°. Installation of a mechanical anti-slide mechanism is recommended for pitched roofs. The mounting is carried out with only one tool (cordless screwdriver with size 6 hexagon socket) when Schletter Standard module clamps are used. The superimposed load can be put in load trays (optional) or can be put onto the base profile. An additional fastening of the mounting system that would perforate the roof is not necessary.



**FixGrid 7 (6°) / FixGrid 15 (13°)**

Alignment to one side (for example to the south)

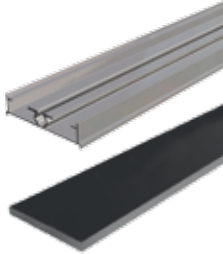


**FixGrid100 7 (6°) / FixGrid100 15 (13°)**

Two-sided alignment (for example east - west) to make the best use of the roof area

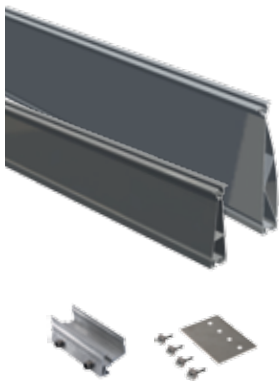
\*in accordance with our General Terms and Conditions of Sale and Supply ([www.schletter.de/AGB\\_en](http://www.schletter.de/AGB_en)); Subject to changes and/or to technical modifications.

**Components**



**FlatGrid base rail for surface protection mat strips**

128039-201	Base rail for FlatGrid 1.00 m
128039-208	Base rail for FlatGrid 1.65 m
128039-202	Base rail for FlatGrid 2.00 m
128039-207	Base rail for FlatGrid 2.50 m
128039-206	Base rail for FlatGrid 3.90 m
128039-006	Base rail for FlatGrid 6.00 m
169004-004	Surface protection mat 10 m 110/8 mm, with alum. lamination



**FixZ top rail**

121001-001	FixZ-7 top rail - custom cut
121001-004	FixZ-7 top rail 4 m
121001-006	FixZ-7 top rail 6 m
121001-06200	FixZ-7 top rail 6.2 m
121003-001	FixZ-15 top rail - custom cut
121003-004	FixZ-15 top rail 4 m
121003-006	FixZ-15 top rail 6 m
121003-06200	FixZ-15 top rail 6.2 m
129002-002	E connector, pre-assembled
129019-001	Additional connector kit for FixZ-15 top rail

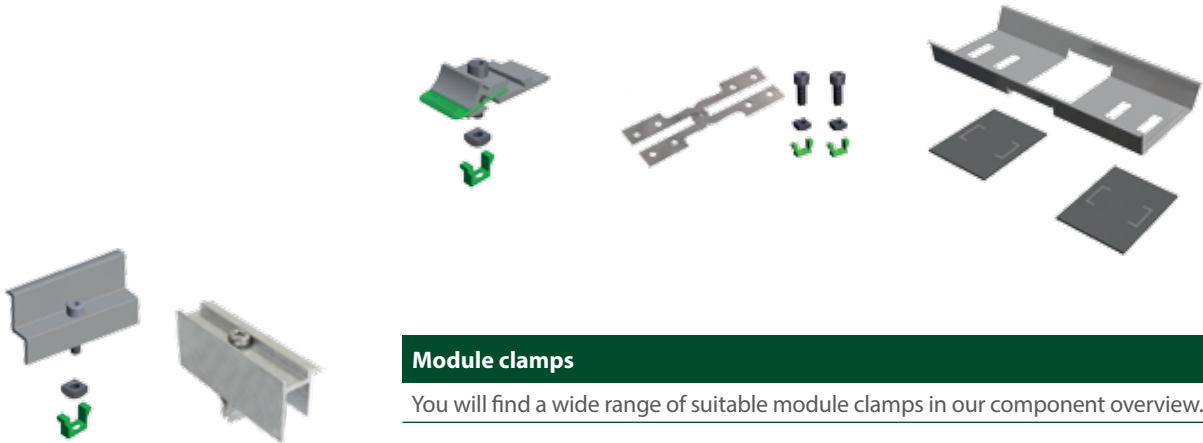


**FixZ rail pieces**

121001-201	FixZ-7 short top rail
121002-201	FixZ-7 short bottom rail
121003-201	FixZ-15 short top rail
121004-201	FixZ-15 short bottom rail

**Auxiliary equipment / accessories**

129004-000	KlickTop cross connector kit M8
129062-001	Tension connector with accessories
169017-000	Additional load tray
169004-007	Surface protection mat 230x160 with retaining flaps



**Module clamps**

You will find a wide range of suitable module clamps in our component overview.

**Technical data**

<b>Material</b>	Surface protection mat: Rubber granulate with aluminium lamination; Fasteners: High-grade steel 1.4301 or higher quality; Other system components: Aluminium EN AW 6063.
<b>Structural analysis</b>	Structural analysis in accordance with current national standards (in Germany EN 1991, EC1 and "abZ" (German general technical approval)). Structural analysis annex for the dimensioning of the amount of required loading. Please ensure you observe the structural analysis information for each case!

Further information at [www.schletter.eu](http://www.schletter.eu)